

**Efficacy of fish passage over the Brunswick-Topsham hydroelectric dam by American shad
(*Alosa sapidissima*)**

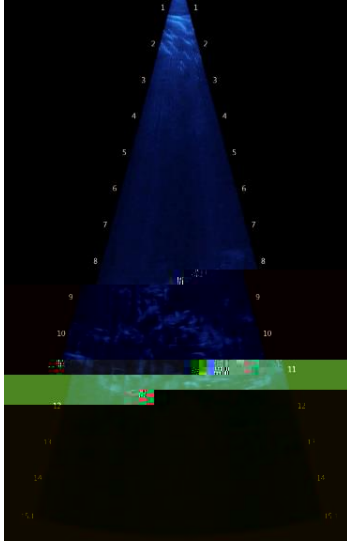


Figure 1. Under-water image from the ARIS Sonar. The light blue fish at the top are American shad. We can tell this because of their size, about half a meter, and behavior, they migrate in schools.

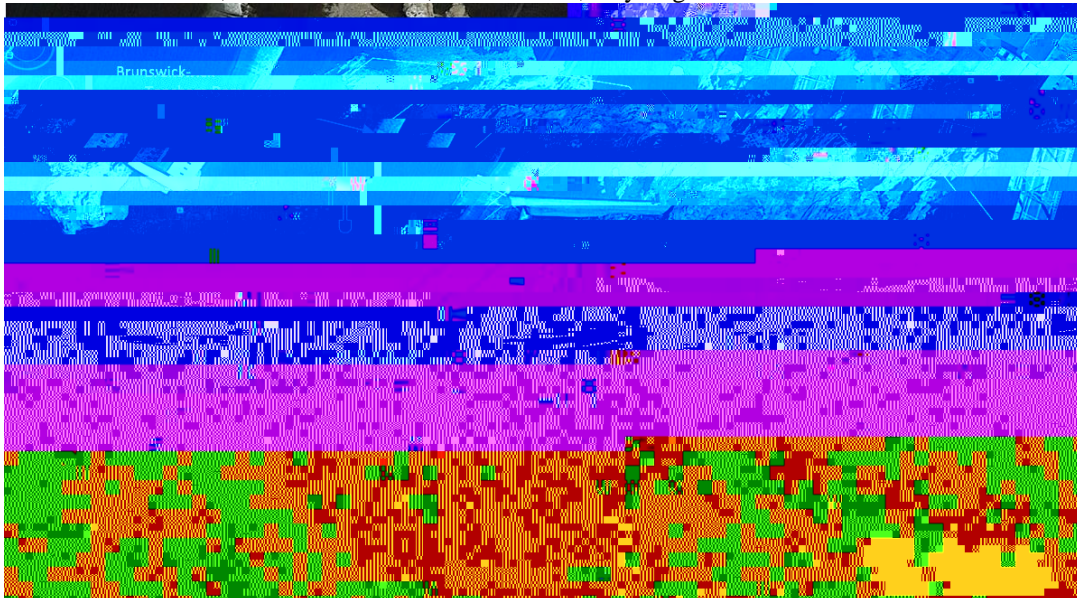


Figure 2. Aerial view of the Brunswick-Topsham dam, fish ladder, bridge, our study site, and the range of the ARIS Sonar.

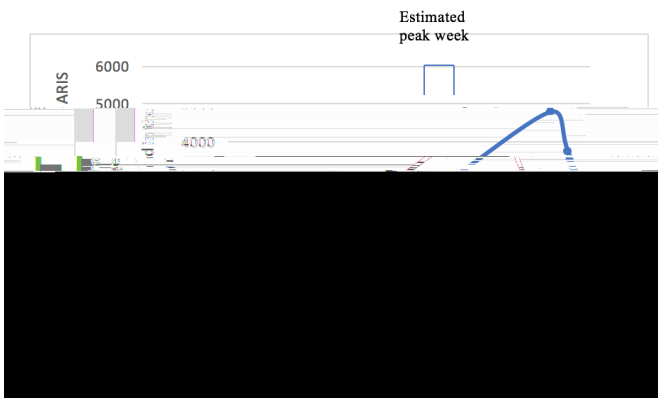


Figure 3. Number of American shad counted for 5 days over the 7 week period of the migration run. The estimated peak week of the run is July 3- July 9.